

# Pontifical Catholic University of Puerto Rico

## SELF-STUDY PROCESS 2012 - 2014

Submitted by: Dr. Herminio Irizarry  
Associate Vice President of Academic Affairs

---

# PCUPR SELF-STUDY PROCESS

---

## PRIMARY PURPOSE:

To advance self-understanding  
and self-improvement

# SELF-STUDY (Primary purpose cont.)

---

## Most useful when:

- Analytical and forward-looking rather than descriptive or defensive
- used to identify problems and develop solutions
- identifies opportunities for growth and development
- implements and adapts self-assessment as a continuous process that supports the institution's regular planning cycle.

# SELF-STUDY

---

- NATIONAL ACCREDITATION STATEMENT
- MISSION-CENTERED
- QUALITY IMPROVEMENT
- ACCESS AND SAFEGUARDING OF FEDERAL FUNDING

# SELF-STUDY

---

## SECONDARY PURPOSE:

✓ COMPLIANCE WITH:

- MSCHE
- ACCREDITATION AGENCIES
- FEDERAL REQUIREMENTS
- DISTANCE EDUCATION (PEER REVIEWER)

# SELF-STUDY

---

WHAT ELSE DO WE WANT TO ACHIEVE?

- STRATEGIC PLAN
- OPERATIONAL PLAN
- STUDENT LEARNING
- INSTITUTIONAL SUCCESS/FAILURE

# SELF- STUDY

---

## WHAT EVIDENCE DO WE HAVE?

- ARE WE SATISFIED WITH OUR EVIDENCE?
- DOES IT SUPPORT OUR STANDARD FOR SUCCESS?
- IF NOT, WHAT ARE WE DOING ABOUT IT?
- DOES OUR INSTITUTION HAVE SUFFICIENT EVIDENCE OF SUCCESS?

# SELF-STUDY

---

## SYSTEMATIC EVIDENCE OF COMPLIANCE

**Not just:**

- ASSESSMENT
- ANECDOTES
- PLANS
- WE NEED EMPIRICAL DATA (Quantitative and Qualitative)



# SELF-STUDY

---

- ANY SIGNIFICANT GAPS OR SHORTCOMINGS?
- WHY?
- WHAT IS THEIR IMPACT?
- DO WE RECOGNIZE THE GAPS?
- DOES EVERYONE "GET IT"?
- IS THERE A PERVASIVE CULTURE OF EVIDENCE-INFORMED PLANNING AND DECISION- MAKING?

# SELF-STUDY

---

- OUR GOALS
- STRATEGIC PLANNING
- OPERATIONAL PLANNING
- LEARNING AND INSTITUTIONAL OUTCOMES

# SELF-STUDY

---

- MAKE VISIBLE WHAT WE ARE ALREADY DOING
- COLLECT AND COMPILE INFORMATION AND REPORTS WE ALREADY HAVE
- CONDUCT DATA ANALYSIS

# SELF-STUDY

---

- MEETING MINUTES/ E-MAIL STREAMS DOCUMENTING:
  - ANALYSIS
  - DISCUSSION
  - DECISIONS
  - WHAT THE RESULTS ARE TELLING US

**“ ANSWERS WITHOUT LINKS TO EVIDENCE ARE NOT ANSWERS ”**

# SELF-STUDY

---

## KEY QUESTIONS:

- WHAT DOES OUR INSTITUTION WANT TO GAIN FROM THE SELF STUDY PROCESS?
- HOW CAN WE USE THE SELF-STUDY TO STRENGTHEN OUR INSTITUTION?
- WHAT MAKES OUR INSTITUTION UNIQUE?

# SELECTING THE MODEL

---

## MODEL SELECTION: COMPREHENSIVE WITH GROUPING

- NEW ADMINISTRATION
- FINANCIAL CRISIS
- OPPORTUNITY TO COMPLEMENT THE STRATEGIC PLAN EXERCISE AT THE SAME TIME!!!!!!!

**“ANY PERSON, ANY STUDY”**

**WITHIN ONE UNIVERSITY**

# SELECTING THE MODEL: TASKS

---

- GOALS FOR SELF- STUDY
- ORGANIZING FOR THE WORK AHEAD
- TIMELINES AND COMMITTEES
- COMMITTEES AND STRUCTURE
- STEERING COMMITTEE AND CO-CHAIRS
- ADMINISTRATIVE SUPPORT
- INVOLVE STUDENTS AND FACULTY
- EDITORS

# OUR MODEL: COMPREHENSIVE GROUPING OF RELATED STANDARDS

---

1. MISSION AND GOALS (S1) and INTEGRITY (S6)
2. PLANNING, RESOURCE ALLOCATION, AND INSTITUTIONAL RENEWAL (S2) , INSTITUTIONAL RESOURCES (S3), and INSTITUTIONAL ASSESSMENT (S7)
3. LEADERSHIP AND GOVERNANCE (S4) and ADMINISTRATION (S5)



# OUR MODEL: COMPREHENSIVE MIX OF RELATED STANDARDS

---

4. STUDENT ADMISSIONS AND RETENTION (S8)  
and STUDENT SUPPORT SERVICES (S9)

5. FACULTY (S10), EDUCATIONAL OFFERINGS  
(S11), GENERAL EDUCATION (S12), RELATED  
EDUCATIONAL ACTIVITIES (S13), and  
ASSESSMENT OF STUDENT LEARNING (S14)

# SELF-STUDY

## Structure of Executive and Steering Committees (Chairs and Co-chairs)

---

### Executive Committee:

#### CHAIR:

Dr. Herminio Irizarry, AVPAA

#### CO-CHAIR:

Prof. Shirley Santiago

Department of English and Foreign  
Languages

# SELF-STUDY:

## Executive Committee Members:

---

Dr. Annie Montero, Executive Secretary,  
Department of English and Foreign Languages

Dr. Carmen J. Acosta-Fumero, Director of  
Accreditation Office

Dr. Félix Cortés, Vice-President of Institutional  
Research, Planning, and Development Office

Prof. María Muñiz, Director of Institutional  
Assessment Office

Prof. Damaris Rosado, Director of Budgeting  
Office

# SELF-STUDY:

## Executive Committee Members

---

Dr. Wilfredo López Mora, Dean of Academic Affairs, Arecibo Branch Campus

Mrs. Nora García de López, Coordinator, Arecibo Branch Campus

Dr. Frank Jimmy Sierra, Dean of Academic Affairs, Mayagüez Branch Campus

Dr. María de los A. Nazario, Graduate School of Education, Mayagüez Branch Campus

Mr. Moisés Cabrera, Director of Data Systems

Mr. Edgardo Rodríguez Dávila, Student Representative

Dr. Jose N. Correa, Board of Trustees Representative

# SELF-STUDY

## Steering Committee (Chairs and Co-chairs)

---

### Steering Committee

(Also includes members of the Executive Committee)

### GROUP 1

#### Standard 1: Mission and Goals and Standard 6: Integrity

**Chair:** Sister Nancy Arroyo, Ph.D., Biology Department

**Co-Chair:** Dr. Giuseppe Zaffaroni, Director of Institutional Office of Social Doctrine

# SELF-STUDY: Steering Committee

---

## GROUP 2

Standard 2: Planning, Resource Allocation, and Institutional Renewal;

Standard 3: Institutional Resources; and  
Standard 7: Institutional Assessment

**Chair:** Dr. Iliá Rosario, College of Graduate Studies in Behavioral Science and Community Affairs

**Co-Chair:** Dr. Ivelit Irizarry, College of Business Administration

# SELF-STUDY: Steering Committee

---

## GROUP 3

Standard 4: Leadership and Governance  
and Standard 5: Administration

**Chair:** Prof. Juan D. Vilaró, Esq., School of  
Law

**Co-Chair:** Dr. Jaime Ortiz Vega, College of  
Education, Mayagüez Branch  
Campus

# SELF-STUDY: Steering Committee

---

## GROUP 4

**Standard 8: Student Admissions and Retention and**

**Standard 9: Student Support Services**

**Chair:** Dr. José A. Rivera, Chair of Chemistry Department

**Co-Chair:** Prof. Carmen González, Chair of Counseling Center



# SELF-STUDY: Steering Committee

---

## GROUP 5

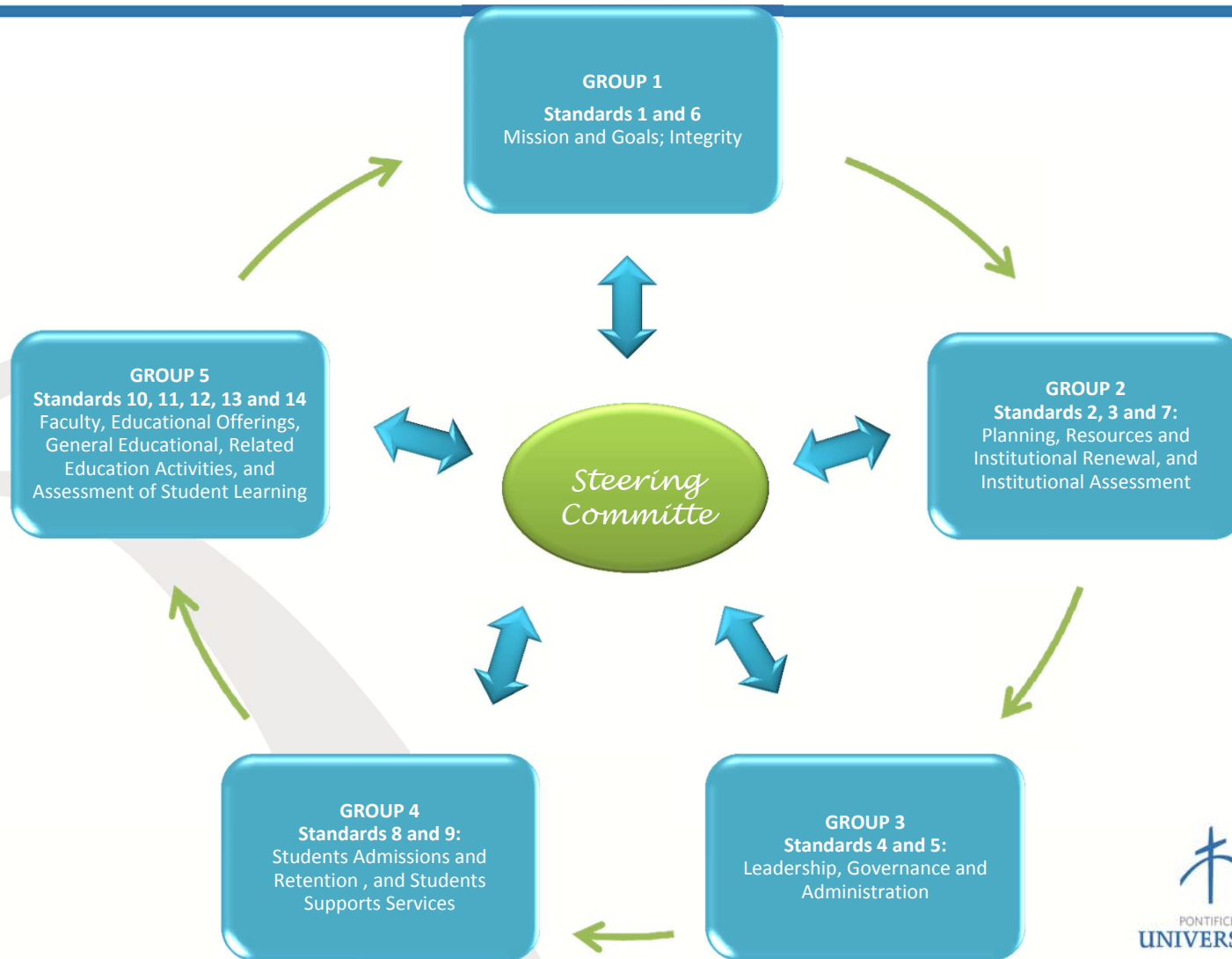
Standard 10: Faculty;  
Standard 11: Educational Offerings;  
Standard 12: General Education;  
Standard 13: Related Education Activities; and  
Standard 14: Assessment of Student Learning

**Chair:** Prof. Carmen Velázquez, Chemistry Department

**Co-Chair:** Prof. Hilda Mejías, Social Science Department  
(Standards 10 and 14)

**Co-Chair:** Dr. Ana Pinilla, College of Graduate Studies  
in Behavioral Science and Community Affairs  
(Standards 11, 12, and 13)

# PCUPR: SELF-STUDY MODEL 2012



# OUR DUTIES

---

- RESEARCH QUESTIONS ( ONE FOR EACH STANDARD) FROM EACH COLLEGE
- TASK GROUP MEMBERSHIP RECOMMENDATIONS (ONE FACULTY MEMBER AND ONE STUDENT FOR EACH GROUP OF STANDARDS) FROM EACH COLLEGE

# ULTIMATE RESOURCE – SELF STUDY

PUCPR SELF STUDY



*External Study*



*Strategic Planning*



*Operational Planning*



STUDENT LEARNING + INSTITUTIONAL  
ASSESSMENT